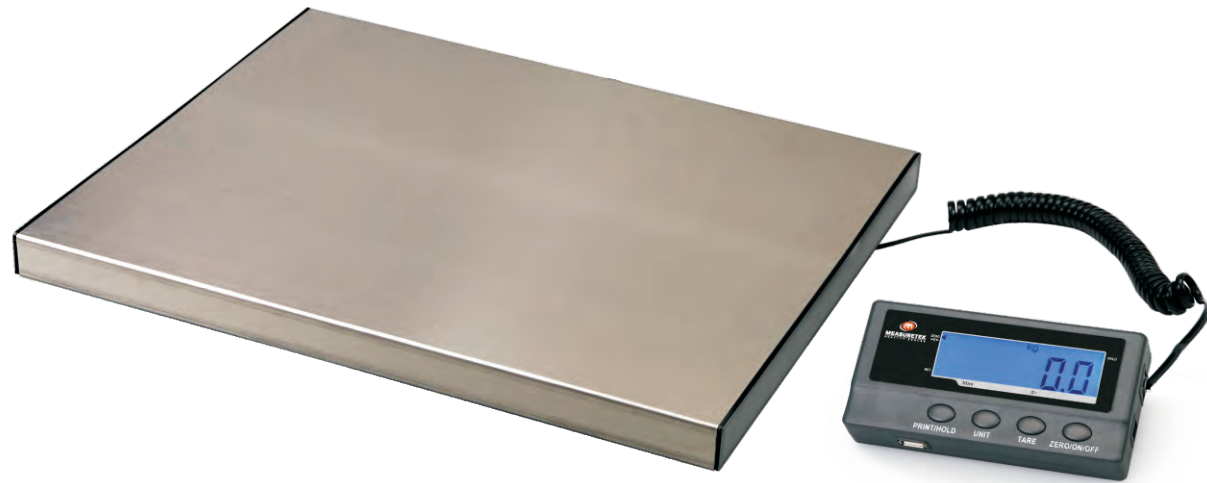


## Economic Version



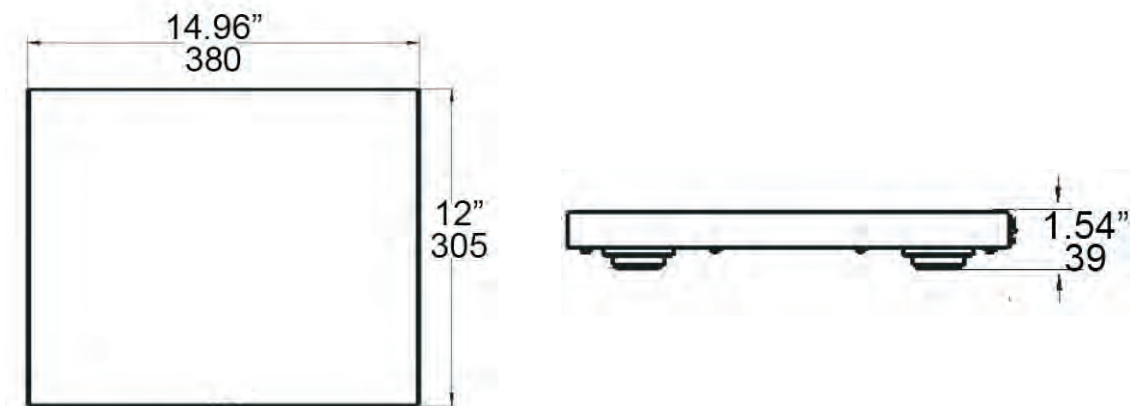
### Features

- **Applications:** Shipping and receiving, warehouse, livestock, general purpose weighing
- **Loadcell:** 4 steel load cells
- **Construction:** Ultra low profile punched steel base with stainless steel platform  
3m coiled cable for durability and easy extension  
Four spring feet for self-centering and quick stability  
Portable design for easy movement to different locations
- **Indicator:** Rugged ABS housing  
Easy-to-read LCD display with optional backlit  
4 keys: ZERO/ON/OFF, TARE, UNIT, HOLD
- **Functions:** Weighing, Hold, Tare, Auto-Off function

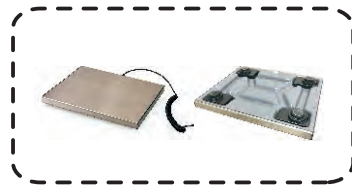
### Specifications

Item	Parameters		
<b>Model</b>	PS-101G-60	PS-101G-120	PS-101G-180
<b>Capacity</b>	60kgx0.05kg 130lbx0.1lb	120kgx0.1kg 250lbx0.2lb	182kgx0.1kg 400lbx0.2lb
<b>Units of Measure</b>	kg, lb, lb:oz		
<b>Display</b>	5 1/2 digits 0.65" high LCD display		
<b>Serial Port</b>	optional USB		
<b>Power</b>	9V 600mA adapter or 1x9V battery		
<b>Operation Temp</b>	0°C to 40°C (32°F to 104°F)		
<b>Platform Size</b>	380mm(L)x305mm(W) / 14.96"(L)x12.01"(W)		
<b>Packing</b>	520x490x340mm/4pcs/ctn		
<b>Shipping Weight</b>	G.W.:22kg N.W.:20kg		
<b>Approvals</b>	CE and WEEE directive, UL/CE/BS/VI Energy approved power adapter		
<b>Options</b>	USB port and cable, backlit		

### Dimensions (mm/inch)



- LCD display with optional backlit
- 4 keys for easy operation, with HOLD function



- Low profile base with four steel loadcells, accuracy +/-0.5%
- Coiled cable (extension length:3m) for easy extension
- Extra black anti-slip rubber mat for option



- Optional USB port for communication with computer